

# ***BETA MARINE***

## MINI FITMENT OF VOLVO SAILDRIVE 110 LEG



Fit rear part of drive plate and element to flywheel inertia ring.

Inertia ring 201-00847

Drive plate 206-04108

For BD902 (BETA 25) use inertia ring 201-06595



Remove the drive from the Volvo leg as shown.



Bolt Volvo adapter (201-01737) to mini flywheel housing (201-01738) using M8 counter sunk screws provided with thread lock. (This may have already been finished for you).



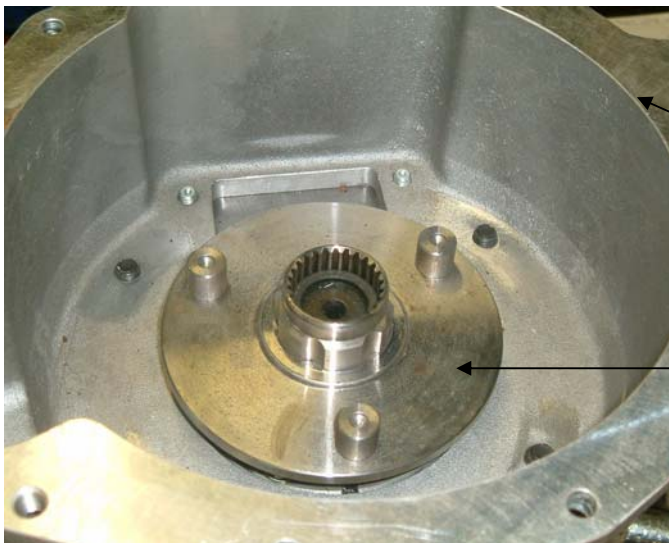
Bolt Volvo sail drive to mini flywheel housing using M10 cap heads and M10 nylock nuts provided.



Align spline and knock front part of drive plate onto shaft of sail drive. Fit until the plate is **76mm** from point A to point B.

**NOTE**

For **BD902 (BETA 25)** set this measurement to **83.5mm**.



Point A

Point B



Once plate is in position, lock grub screw onto shaft using small amount of thread lock.



Tighten with caution so as not to strip thread.



Finally locate pins with element and push together and bolt using provided blots.

### IMPORTANT

After assembly, check that crank shaft still has end float.